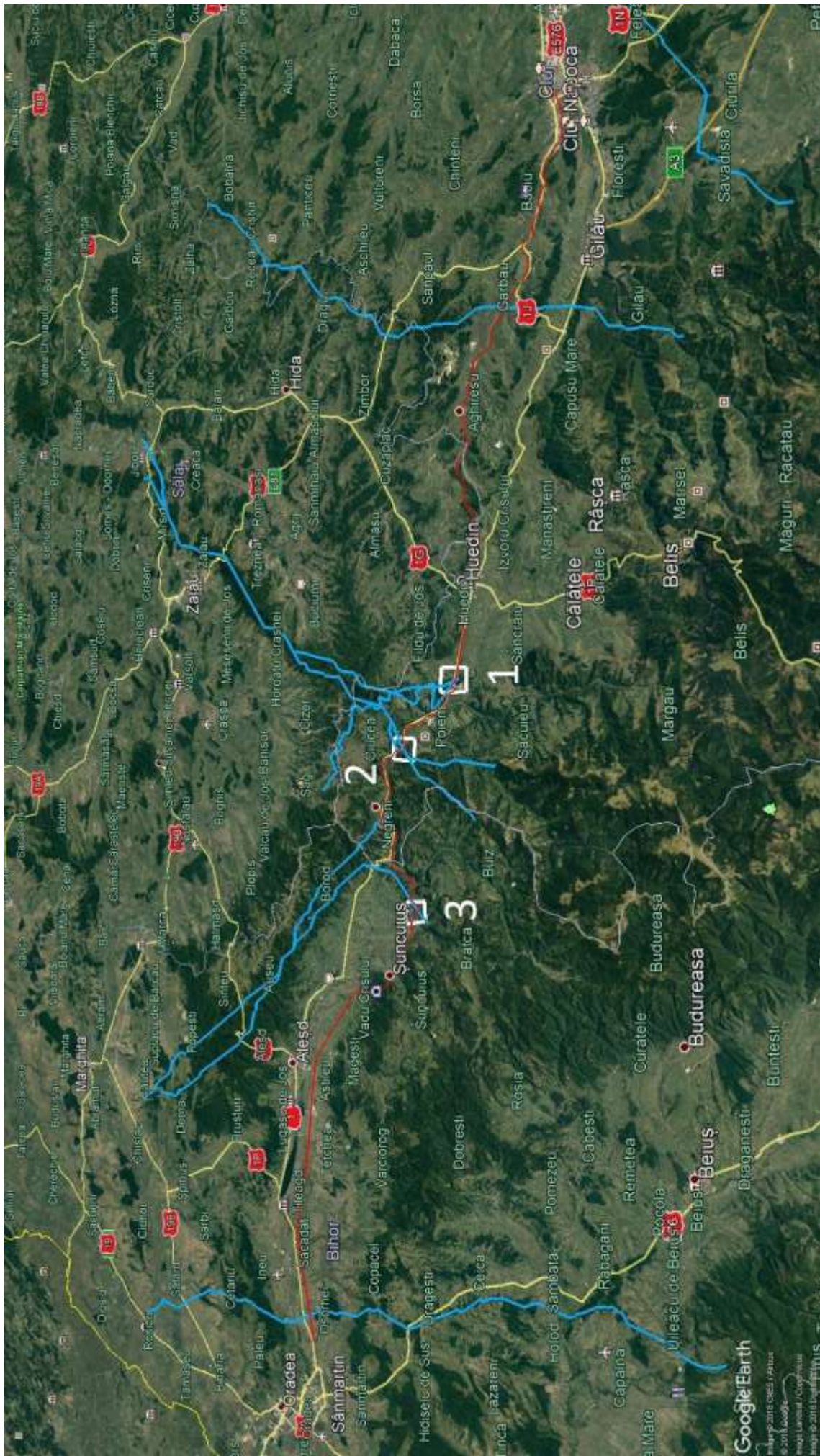
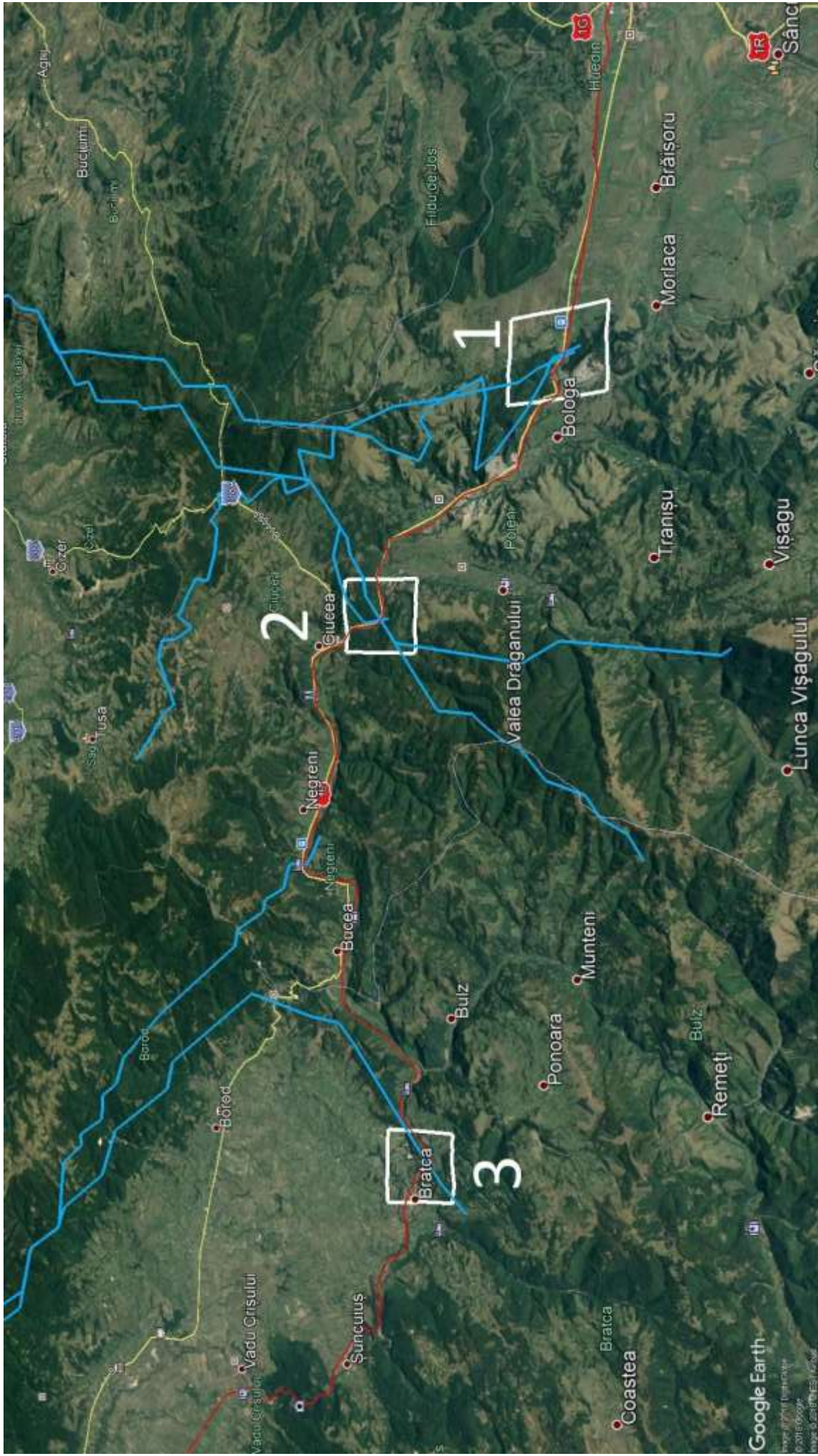


Exercise 1 – The identification of suitable areas for the placement of ecoducts, where multiple barriers for wildlife connectivity are present

Working in teams, please identify multiple, different solutions for the placement of ecoducts, considering the natural and anthropic characteristics of the area and the known favourable passage areas for wildlife. Provide appropriate arguments for the chosen placement solutions and explain them to the other participants. The best proposed solutions will be chosen based on the voting of all the participants.

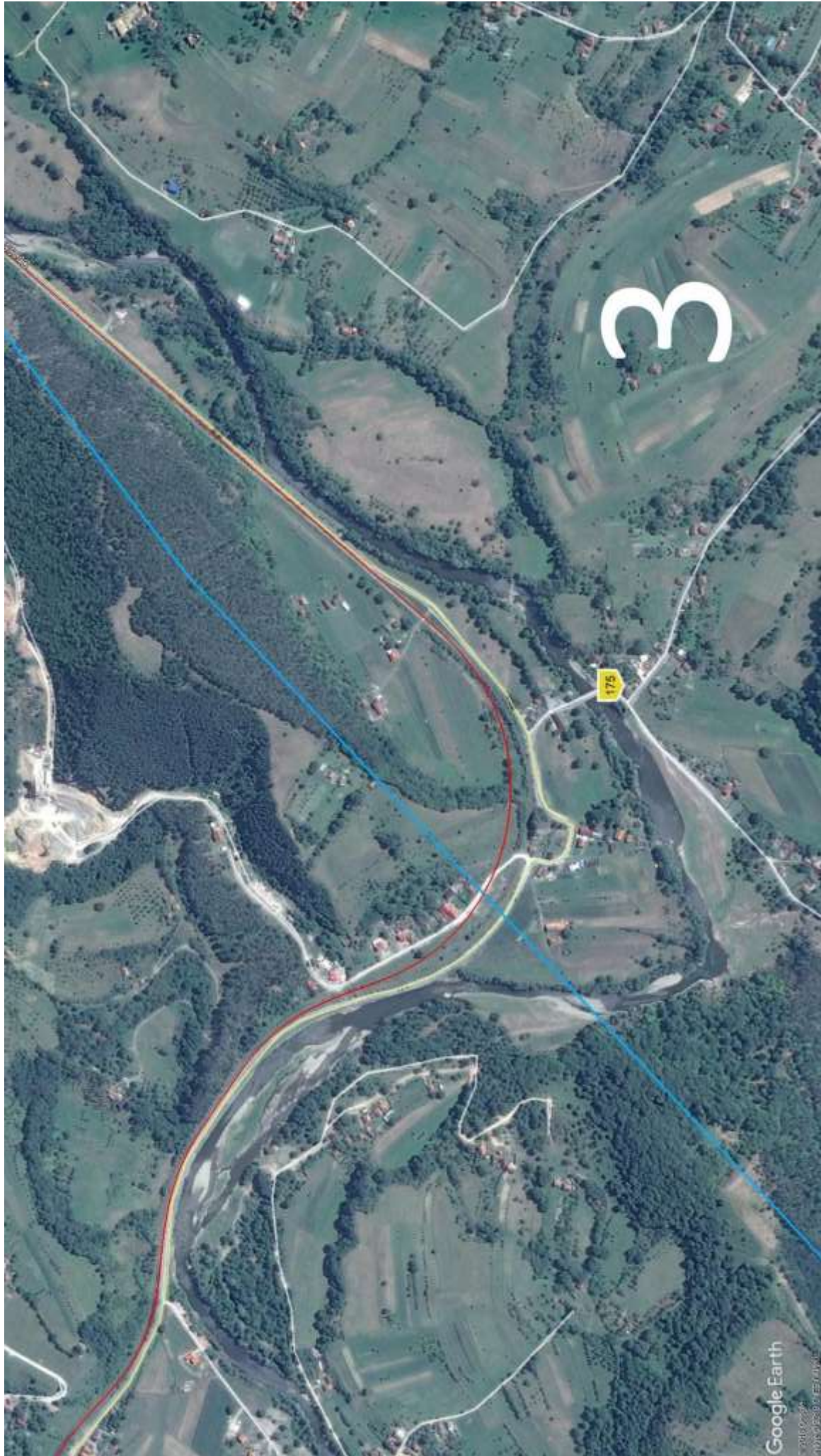






2





3

175